



Screwed End Ball Valves

2006HL

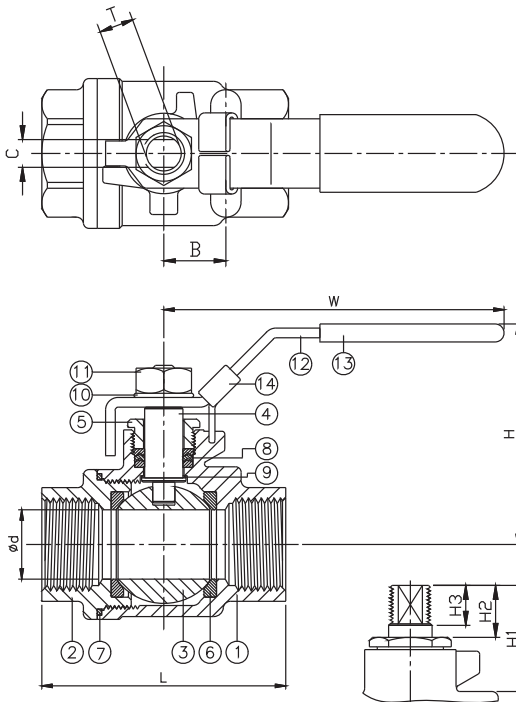
2-PIECE FULL PORT

VMTM2006HLRSS



FEATURES

- Investment casting
- Blow-out proof stem
- Anti-static device (option)
- Lock device handle
- With tapped & drilled mounting pad
- Thread type
ASME B1.20.1 (NPT)
DIN 2999 & BS21
ISO 228/1 & ISO 7/1



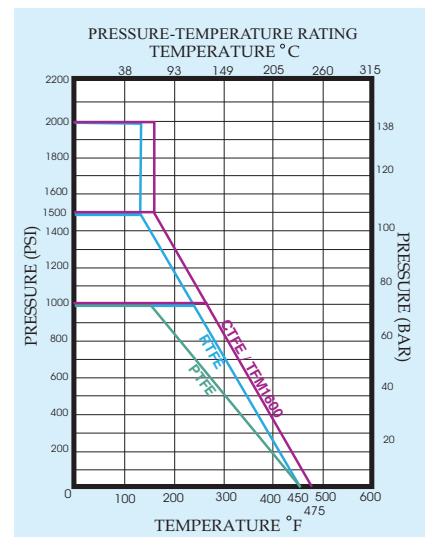
ITEM	PARTS	MATERIAL
1	BODY	ASTM A351-CF8M
2	CAP	
3	BALL	
4	STEM	ASTM A276-316
5	GLAND NUT	AISI 304
6	BALL SEAT	RTFE
7	BODY SEAL	PTFE
8	PACKING	PTFE / RTFE
9	THRUST WASHER	PTFE
10	SPRING WASHER	AISI 304
11	NUT	
12	HANDLE	
13	HANDLE SLEEVE	PVC
14	LOCK DEVICE	AISI 304

PN150	DN	d	L	H	W	B	C	H1	H2	H3	T	Torque (N-m)	Weight (kg)
	8	12	60.5	50	102	14	5	32.5	12.5	10.5	5/16"W	4.07	0.26
10	13	60.5	50	102	14	5	32.5	12.5	10.5	5/16"W	4.07	0.28	
15	15	64	50	102	14	5	32.5	12.5	10.5	5/16"W	4.41	0.3	

unit:mm

2000WOG	NPS	d	L	H	W	B	C	H1	H2	H3	T	Torque (in-lb)	Weight (lb)
	1/4"	0.47	2.38	1.97	4.02	0.55	0.2	1.28	0.49	0.41	5/16"W	36.02	0.57
3/8"	0.51	2.38	1.97	4.02	0.55	0.2	1.28	0.49	0.41	5/16"W	36.02	0.62	
1/2"	0.59	2.52	1.97	4.02	0.55	0.2	1.28	0.49	0.41	5/16"W	39.03	0.66	

unit:in



Mid-States Supply Co Inc.

Process Piping / Automation / Controls / Steam Specialties / IT Solutions

www.MidcoOnline.com

