

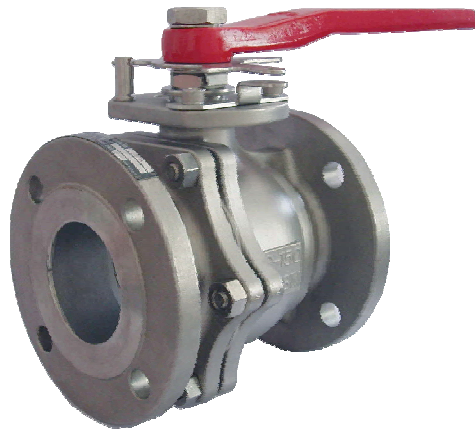


Flanged End Ball Valves

2020W

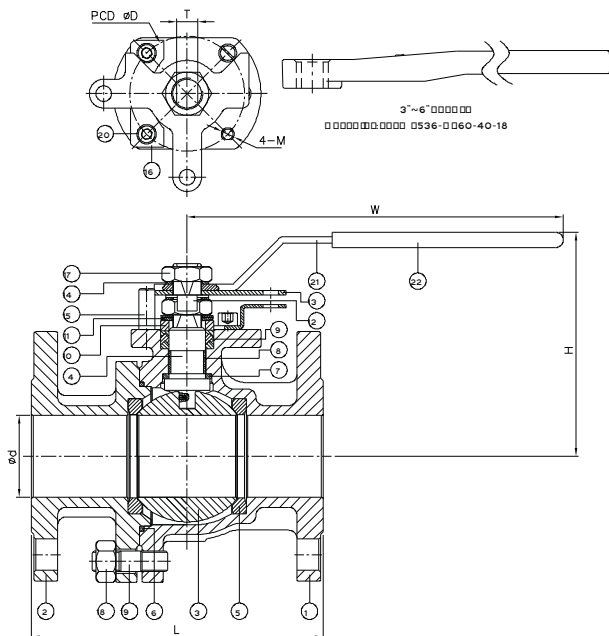
ANSI 150 2-PIECE FULL PORT

VMTM2020WF SS or CS (6" Only Stock)



FEATURES

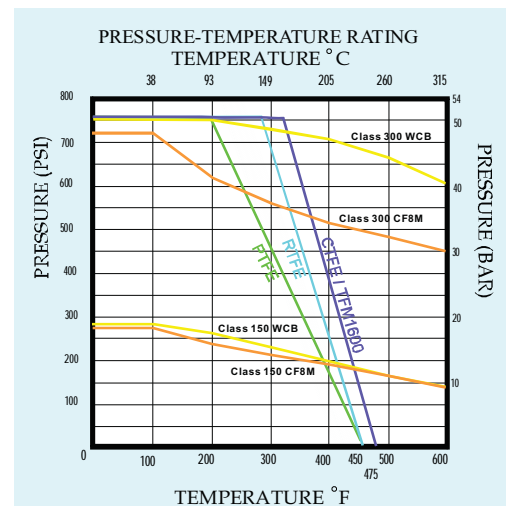
- Investment casting
- Blow-out proof stem
- Anti-static device(option)
- Live-loaded design
- ISO 5211 mounting pad
- Fire safe design
- Flange dimension: ASME B16.5
- Face to face: ASME B16.10



ITEM	PARTS	MATERIAL	
1	BODY	ASTM A351-CF8M /ASTM A216-WCB	
2	CAP		
3	BALL	ASTM A351-CF8M	
4	STEM	ASTM A276-316	
5	BALL SEAT	TFM	
6	BODY SEAL	GRAPHITE	
7	THRUST WASHER 1	CTFE	
8	THRUST WASHER 2	PTFE	
9	PACKING	GRAPHITE	
10	GLAND RING	AISI304	
11	BELLEVILLE WASHER		
12	LOCK WASHER		
13	STOPPER		
14	FLAT WASHER		
15	STOP PIN		
16	BRACKET		
17	STEM NUT		
18	NUT		
19	STUD		
20	BOLT		
21	HANDLE		
22	HANDLE SLEEVE		PVC

DN	d	L	H	W	T	D	M	Torque (N-M)		Weight (kg)
								Action	Breakaway	
15	15	108	85.5	147	9	42	1/4"-20UNC	3.7	5.1	2
20	20	117	88.5	147	9	42	1/4"-20UNC	5.5	7.2	2.2
25	25	127	97.5	147	12	50	1/4"-20UNC	7.5	14	3
40	38	165	128	226	13	70	5/16"-18UNC	14	17	5.9
50	50	178	135	226	13	70	5/16"-18UNC	26	36.5	8.9
65	63	190	161	226	13	70	5/16"-18UNC	36	45	13
80	80	203	167	345	18	102	3/8"-16UNC	39	50	20.7
100	98	229	188	345	18	102	3/8"-16UNC	65	105	29.1
150	150	394	237	766	28.5	125	1/2"-13UNC	170	247	72.1

NPS	d	L	H	W	T	D	M	Torque (in-lb)		Weight (lb)
								Action	Breakaway	
1/2"	0.59	4.25	3.37	5.79	0.35	1.65	1/4"-20UNC	32.75	45.14	4.41
3/4"	0.79	4.61	3.48	5.79	0.35	1.65	1/4"-20UNC	48.68	63.73	4.85
1"	0.98	5	3.84	5.79	0.47	1.97	1/4"-20UNC	66.38	123.91	6.61
1-1/2"	1.5	6.5	5.04	8.9	0.51	2.76	5/16"-18UNC	123.91	150.46	13.01
2"	1.97	7.01	5.31	8.9	0.51	2.76	5/16"-18UNC	230.12	323.05	19.62
2-1/2"	2.48	7.48	6.34	8.9	0.51	2.76	5/16"-18UNC	318.63	398.28	28.66
3"	3.15	7.99	6.57	13.58	0.71	4.02	3/8"-16UNC	345.18	442.54	45.64
4"	3.86	9.02	7.4	13.58	0.71	4.02	3/8"-16UNC	575.3	929.32	64.15
6"	5.91	15.51	9.33	30.16	1.12	4.92	1/2"-13UNC	1504.62	2186.12	158.95



Mid-States Supply Co Inc.

Process Piping / Automation / Controls / Steam Specialties / IT Solutions

www.MidcoOnline.com



Designed, engineered, and manufactured by Haitima Corp.

042110rv2